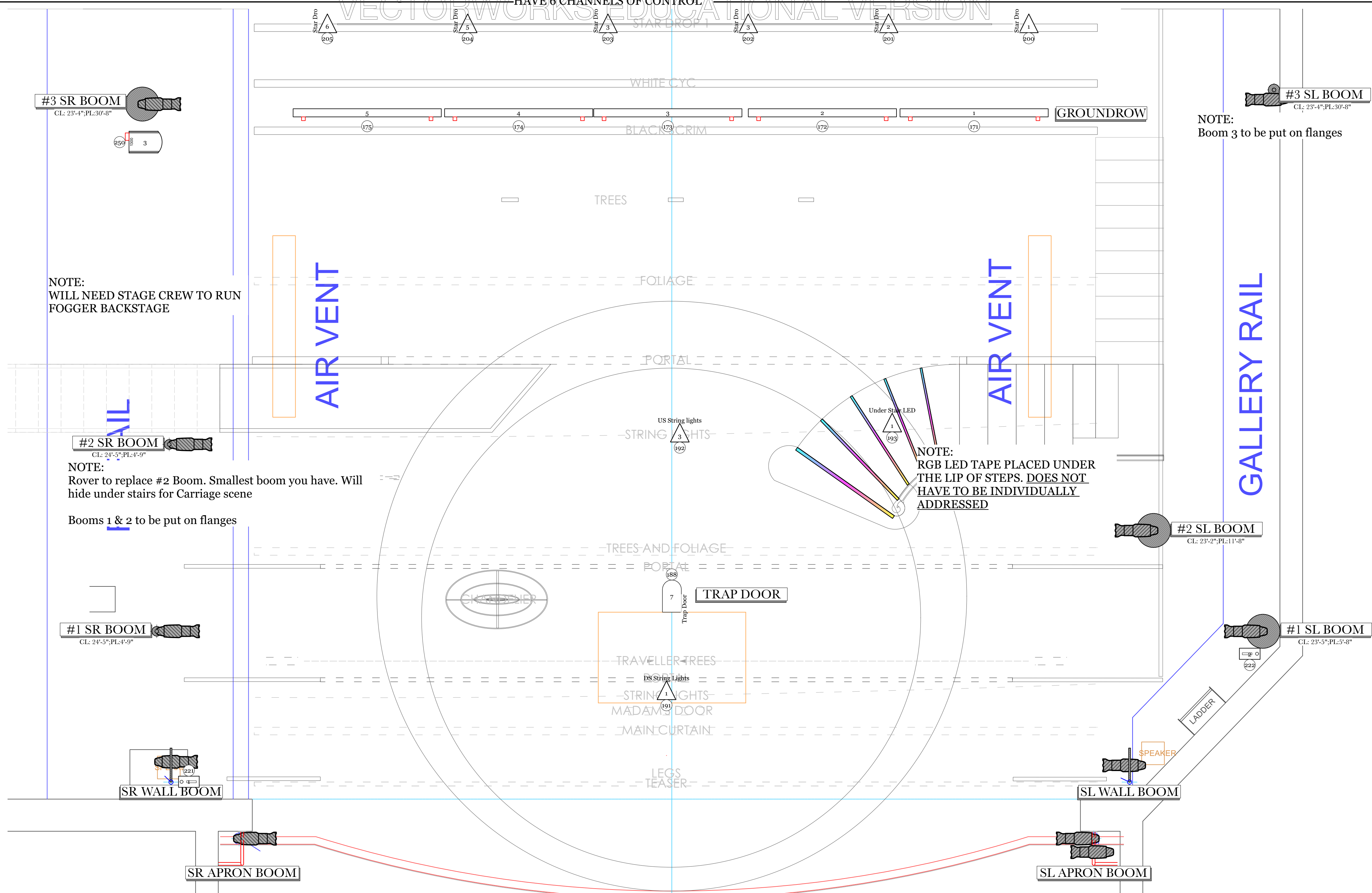


NOTE:
IF POSSIBLE, STAR WALL IS TO
HAVE 6 CHANNELS OF CONTROL

VECTORWORKS EDUCATIONAL VERSION



NOTE:
WILL NEED STAGE CREW TO RUN
FOGGER BACKSTAGE

NOTE:
Rover to replace #2 Boom. Smallest boom you have. Will
hide under stairs for Carriage scene

Booms 1 & 2 to be put on flanges

NOTE:
RGB LED TAPE PLACED UNDER
THE LIP OF STEPS. DOES NOT
HAVE TO BE INDIVIDUALLY
ADDRESSED

NOTE:
Boom 3 to be put on flanges

KEY TO INSTRUMENTATION

[Symbol]	ETC Source Four 25' @575w
[Symbol]	ETC Source Four 36' @575w
[Symbol]	ETC Source Four 50' @750w
[Symbol]	ETC Source Four 19' @750w
[Symbol]	ETC Source Four 26' @750w
[Symbol]	ETC Source Four 36' @750w
[Symbol]	ETC Source Four 50' @750w
[Symbol]	Chauvet Ovation E-260 14' @221w
[Symbol]	ETC S4 LEDZLS 19' @171w
[Symbol]	ETC S4 LEDZLS 25' @171w
[Symbol]	ETC S4 LEDZLS 36' @171w
[Symbol]	ETC S4 LEDZLS 50' @171w
[Symbol]	ETC S4 Par MFL @575w
[Symbol]	ETC S4 Par WFL @575w
[Symbol]	Colorsource Par DB WR @90w
[Symbol]	Alman Par MFL @1kw
[Symbol]	Colorsource Linear 4 DB @440w
[Symbol]	High End SoloFrame 750 @562w
[Symbol]	ADJ VF100
[Symbol]	Chauvet Hurricane 2D
[Symbol]	Practical
[Symbol]	Color Designates
[Symbol]	Unit # Designates
[Symbol]	Channel

GENERAL NOTES:

1. Please have both sets of R119 & R112 on hand for focus
2. Rig machine to be given final position upon LD arrival to theatre
3. Please drop all cables, accessories, and templates prior to focus
4. No substitutions or alterations shall be made without the consent of the Lighting Designer
5. See Section drawing for correct placement of trap door light and Boom Side Area position
6. See corresponding paperwork for cables, templates, and fcs

REV.	DESCRIPTION	DATE
1	Update/Amend fixture placement	12/17/21
2	Update/Amend fixture placement	12/17/21
3	Minor Update/Amend	01/08/22
4	Revised	01/17/22
5	REVISED	02/11/22



CFRT
CATAWBA REGIONAL THEATRE
1309 Hay St. Fayetteville, NC 28305

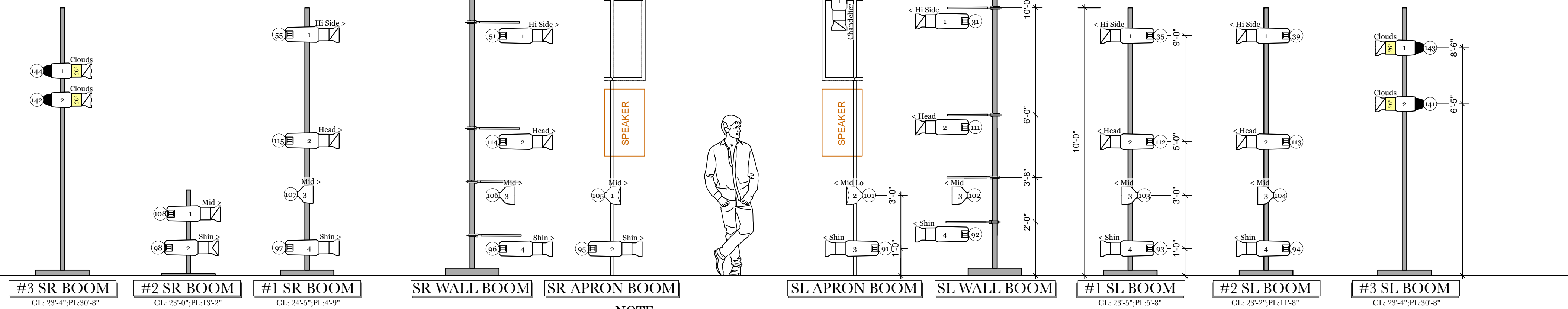
Rodriguez and Hammerstein's
Cinderella
DIRECTED BY: Thomas Connor
LIGHTING BY: Trey Brazeal
SCENERY BY: Rodrigo Escalante
COSTUMES BY: Emily White
SOUND BY: Alan Brock
MUSIC DIRECTION: Sarah Winnow

Kentrell M. Brazeal
TREY BRAZEAL
Lighting Designer
trebrazeal@cfprt.com www.trebrazeal.com

THIS DRAWING REPRESENTS VISUAL CONCEPTS AND IS NOT TO BE USED FOR CONSTRUCTION. IT DOES NOT REPLACE THE KNOWLEDGE AND SKILLS OF A LICENSED PROFESSIONAL ENGINEER. THE ENGINEER IS NOT RESPONSIBLE FOR THE DESIGN AND WILL NOT ASSUME RESPONSIBILITY FOR CONSTRUCTION OF THE PROJECT.

SCALE: As Shown
DRAWN BY: Trey Brazeal
CREATED: December 12, 2021
REVISED: January 17, 2022
FILE: 2021-01-17-01

DECK PLOT



NOTE:
- All boom lights measured from show deck
- SL #2 Boom to be placed on smallest boom we have

VECTORWORKS EDUCATIONAL VERSION