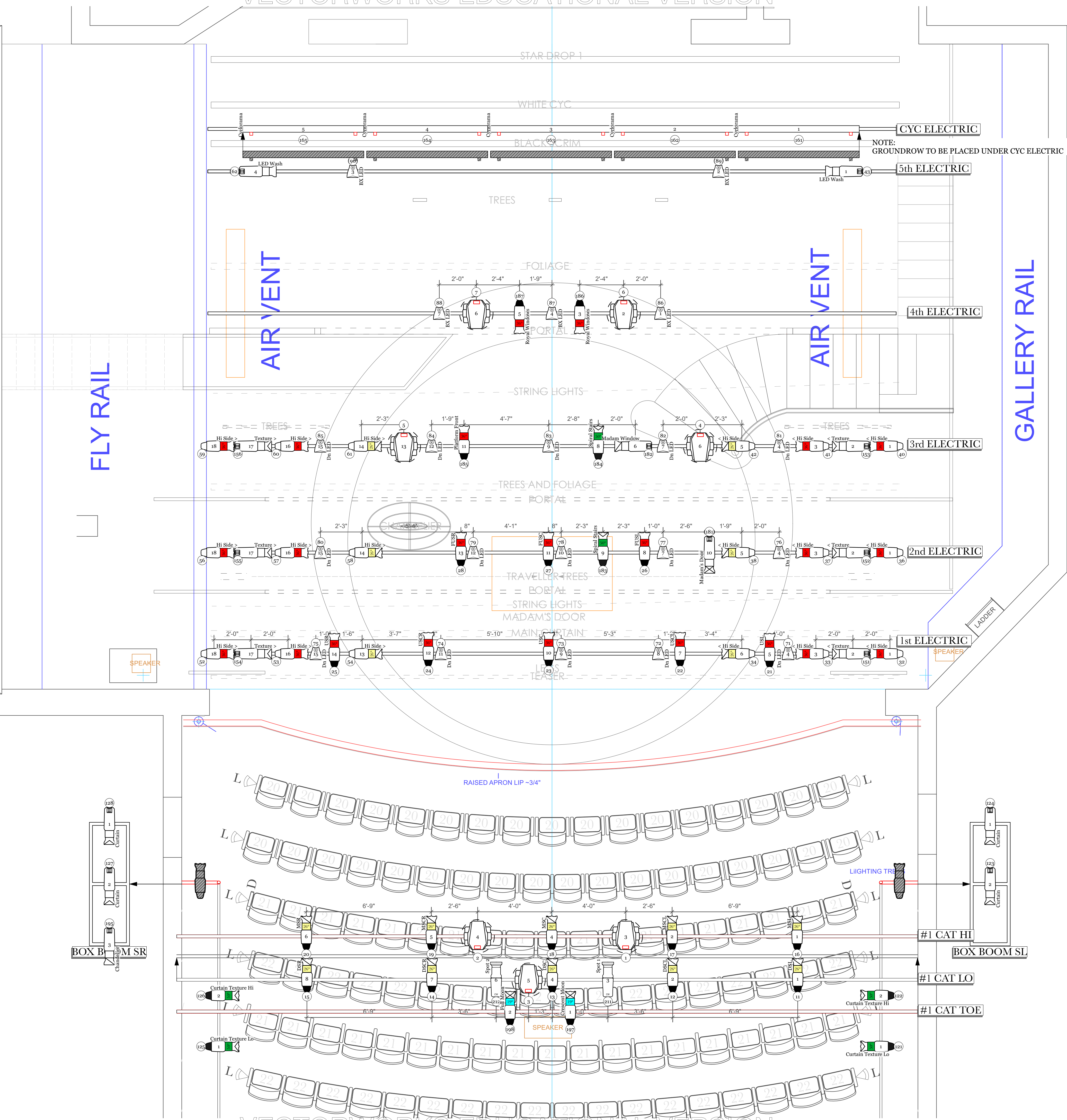


Lineset	Purpose	Height
27	Star Drop/Dead Hung	X
26	X	X
25	Cyclorama	X
24	Cyc Electric	19'-0"
23	Scrim	X
22	X	X
21	Trees/Masking	X
20	X	X
19	Foliage	X
18	Trick Wire	X
17	4th Electric	17'-8"
16	Portal (+1' US)	X
15	X	X
14	Masking	X
13	LED Wall	X
12	Trees	X
11	3rd Electric/Border	19'-5"
10	Trees/Foliage	X
09	Masking	X
08	Chandelier	X
07	2nd Electric	19'-5"
06	Trees - Traveler	X
05	Masking	X
04	House Roof/String Lights	X
03	Curtain Track	X
02	1st Electric	19'-5"
01	Teaser/Legs	X
	Plaster Line	0'-0"



KEY TO INSTRUMENTATION

- ETC Source Four 25' @575w
- ETC Source Four 36' @575w
- ETC Source Four 50' @575w
- ETC Source Four 19' @750w
- ETC Source Four 26' @750w
- ETC Source Four 36' @750w
- ETC Source Four 50' @750w
- Chauvet Ovation E-260 14' @221w
- ETC S4 LEDZLS 19' @171w
- ETC S4 LEDZLS 25' @171w
- ETC S4 LEDZLS 36' @171w
- ETC S4 LEDZLS 50' @171w
- ETC S4 Par MFL @575w
- ETC S4 Par WFL @575w
- Colorsource Par DB WR @90w
- Alman Par MFL @1kw
- Colorsource Linear 4 DB @440w
- High End SoloFrame 750 @562w
- ADJ VF100
- Chauvet Hurricane 2D

LEGEND

- Color Designates
- Unit Designates
- Channel Designates

GENERAL NOTES:

- Please see both ends of R119 & R112 on hand for faces
- Fix machine to be given final position upon LD arrival to house
- Please drop all cables, accessories, and templates prior to face
- No substitutions or alterations shall be made without the consent of the Lighting Designer
- See Section drawing for correct placement of trap door, light and Boom Side Area positions
- See corresponding paperwork for cables, templates, and fix

1	Update/Verify fixture placement	12/17/21
2	Update/Add Items	11/17/21
3	Minor Edits/Adjustment	11/18/21
4	Revised	12/17/21
5	REVISED	01/11/22
6	REVISED	01/11/22
7	REVISED	01/11/22
8	REVISED	01/11/22
9	REVISED	01/11/22
10	REVISED	01/11/22
11	REVISED	01/11/22
12	REVISED	01/11/22
13	REVISED	01/11/22
14	REVISED	01/11/22
15	REVISED	01/11/22
16	REVISED	01/11/22
17	REVISED	01/11/22
18	REVISED	01/11/22
19	REVISED	01/11/22
20	REVISED	01/11/22
21	REVISED	01/11/22
22	REVISED	01/11/22
23	REVISED	01/11/22
24	REVISED	01/11/22
25	REVISED	01/11/22
26	REVISED	01/11/22
27	REVISED	01/11/22
28	REVISED	01/11/22
29	REVISED	01/11/22
30	REVISED	01/11/22
31	REVISED	01/11/22
32	REVISED	01/11/22
33	REVISED	01/11/22
34	REVISED	01/11/22
35	REVISED	01/11/22
36	REVISED	01/11/22
37	REVISED	01/11/22
38	REVISED	01/11/22
39	REVISED	01/11/22
40	REVISED	01/11/22
41	REVISED	01/11/22
42	REVISED	01/11/22
43	REVISED	01/11/22
44	REVISED	01/11/22
45	REVISED	01/11/22
46	REVISED	01/11/22
47	REVISED	01/11/22
48	REVISED	01/11/22
49	REVISED	01/11/22
50	REVISED	01/11/22
51	REVISED	01/11/22
52	REVISED	01/11/22
53	REVISED	01/11/22
54	REVISED	01/11/22
55	REVISED	01/11/22
56	REVISED	01/11/22
57	REVISED	01/11/22
58	REVISED	01/11/22
59	REVISED	01/11/22
60	REVISED	01/11/22
61	REVISED	01/11/22
62	REVISED	01/11/22
63	REVISED	01/11/22
64	REVISED	01/11/22
65	REVISED	01/11/22
66	REVISED	01/11/22
67	REVISED	01/11/22
68	REVISED	01/11/22
69	REVISED	01/11/22
70	REVISED	01/11/22
71	REVISED	01/11/22
72	REVISED	01/11/22
73	REVISED	01/11/22
74	REVISED	01/11/22
75	REVISED	01/11/22
76	REVISED	01/11/22
77	REVISED	01/11/22
78	REVISED	01/11/22
79	REVISED	01/11/22
80	REVISED	01/11/22
81	REVISED	01/11/22
82	REVISED	01/11/22
83	REVISED	01/11/22
84	REVISED	01/11/22
85	REVISED	01/11/22
86	REVISED	01/11/22
87	REVISED	01/11/22
88	REVISED	01/11/22
89	REVISED	01/11/22
90	REVISED	01/11/22
91	REVISED	01/11/22
92	REVISED	01/11/22
93	REVISED	01/11/22
94	REVISED	01/11/22
95	REVISED	01/11/22
96	REVISED	01/11/22
97	REVISED	01/11/22
98	REVISED	01/11/22
99	REVISED	01/11/22
100	REVISED	01/11/22



CFRT
CATAWBA REGIONAL THEATRE
1399 Hwy 58, Taylorsville, NC 28680

Rodgers and Hammerstein's Cinderella
DIRECTED BY: Thomas Casper
LIGHTING BY: Trey Brazeal
SCENERY BY: Rodrigo Escalante
COSTUMES BY: Emily White
SOUND BY: Alex Brock
MUSIC DIRECTION: Sarah Weston

Kentrell M. Brazeal
T BRAZEAL
Lighting Designer

THIS DRAWING REPRESENTS VISUAL CONCEPTS AND CONCEPTS ONLY. THE DESIGNER DOES NOT ASSUME RESPONSIBILITY FOR THE FINAL EXECUTION OF THE DESIGN. THE DESIGNER IS NOT RESPONSIBLE FOR THE DESIGN OR THE EXECUTION OF THE DESIGN AND WILL NOT ASSUME RESPONSIBILITY FOR THE DESIGN OR THE EXECUTION OF THE DESIGN.

SCALE:	As Shown	PLATE:	1
DRAWN BY:	Trey Brazeal	DATE:	December 12, 2021
CREATED:	December 12, 2021	REVISED:	January 17, 2022
FILE:			

LX PLOT